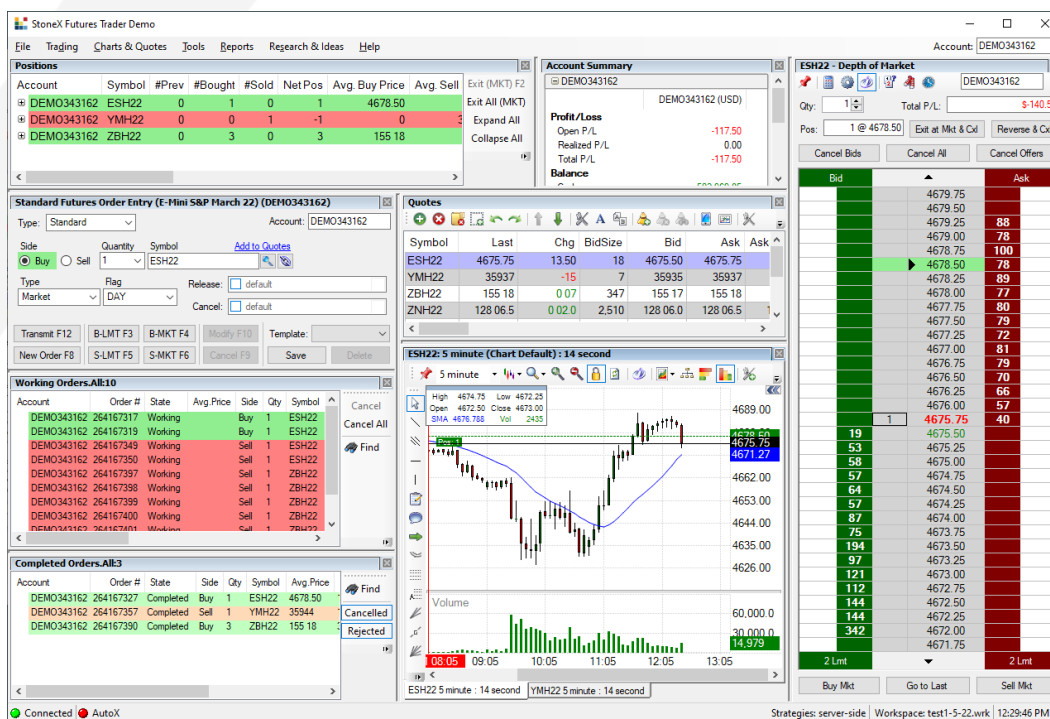


StoneX Futures Trader Platform



- Trade Ticket & Depth of Market
- Trade from the Chart
- Bracket Order (Profit Target and Stop Loss) Functionality
- Quotes & Charting
- Indicators & Strategies
- Algorithm/Systems Trading
- Risk Management
- Allocation Blocks
- Custom Layouts

For more information, contact Tom Mitchell or Marty Malone:

Email: Thomas.Mitchell@StoneX.com
Martin.Malone@StoneX.com

Phone: 312-706-7252
 Phone 312-706-7253

StoneX Group Inc. (Formerly INTL FCStone Inc.) provides financial services worldwide through its subsidiaries in accordance with applicable law in the jurisdictions where services are provided. All references to exchange-traded futures and options are made solely on behalf of the FCM Division of INTL FCStone Financial Inc. ("IFCF"), a member of the National Futures Association and registered with U.S. Commodity Futures Trading Commission as a futures commission merchant and commodity trading advisor. The trading of derivatives such as futures and options may not be suitable for all investors. Derivatives trading involves substantial risk of loss, and you should fully understand those risks prior to trading.

StoneX Group Inc. (Formerly INTL FCStone Inc.) provides financial services worldwide through its subsidiaries in accordance with applicable law in the jurisdictions where services are provided. All references to exchange-traded futures and options are made solely on behalf of the FCM Division of INTL FCStone Financial Inc. ("IFCF"), a member of the National Futures Association and registered with U.S. Commodity Futures Trading Commission as a futures commission merchant and commodity trading advisor. The trading of derivatives such as futures and options may not be suitable for all investors. Derivatives trading involves substantial risk of loss, and you should fully understand those risks prior to trading.

*StoneX Financial Ltd ("SFL"), a company registered in England & Wales is authorised & regulated by the Financial Conduct Authority [FRN: 446717]. SFL is a clearing member of the London Metal Exchange ("LME"), Euronext Paris, Euronext Amsterdam and Eurex. IFCF affiliate, INTL FCStone DTVM Ltd is a clearing member of BM&F Bovespa. StoneX Financial Pte. Ltd. is a clearing member of the Singapore Exchange.

© 2020 StoneX Group Inc. All Rights Reserved.

on behalf of the FCM Division of INTL FCStone Financial ("IFCF"), a member of the National Futures Association and registered with U.S. Commodity Futures Trading Commission as a futures commission merchant and commodity trading advisor. The trading of derivatives such as futures and options may not be suitable for all investors. Derivatives trading involves substantial risk of loss, and you should fully understand those risks prior to trading.